

William Blair SICAV US Equity Sustainability Fund

Investors should note that, relative to the expectations of the Autorité des Marchés Financiers, the name of this UCITS is disproportionate to the consideration of non-financial criteria in its investment policy.

OBJECTIVE

Capital Appreciation

CHARACTERISTICS

The Fund seeks to invest across the market cap spectrum in companies with strong growth characteristics, quality management teams and solid financials.

FUND FACTS AND STATISTICS

Total Net Assets (\$MM)	\$48
Number of Holdings	44
Wgtd Avg Mkt Cap (\$BB)	\$838.0
Unwgted Median Mkt Cap (\$BB)	\$44.5
P/E Ratio (Next 12 Months)	23.6
EPS Growth (Projected)(%)	16.0%
Trailing 1-Year Turnover (%)	33.3%
Cash	1.4%
Inception Date	19.12.2018
Minimum Purchase Amount	\$1,000,000
ISIN Number	LU0995404869
Valoren Number	22883378
Bloomberg Ticker	WBACJUU LX
Management Fee	0.70%
Total Expense Ratio	1.00%

WHY CONSIDER THIS FUND?

- Seeks to deliver competitive returns over time with a moderate risk profile
- Applies a time-tested, fundamental research approach to assess a company's growth sustainability and critical success factors
- Features an unconstrained opportunity set to leverage the best ideas, regardless of market cap
- Provides a focused yet diversified portfolio of stocks
- Managed by an experienced and long-tenured portfolio management team
- The Fund is actively managed and is not constrained by a benchmark

RISKS

- The value of shares can increase or decrease and an investor may not get back the amount originally invested
- Where investments are made in currencies other than an investor's base currency, the value of those investments will be affected (favourably or unfavourably) by movements in exchange rates
- Equity securities may decrease in value in response to the activities of an individual company or in response to general market, business, and economic conditions
- The Fund focuses its investments in the United States and will have greater exposure to the market, political and economic risks of that country than if it was more diversified across a number of countries

INVESTMENT PERFORMANCE % (Period ending 31.03.2024)

	1 MTH	YTD	1Y	3Y	5Y	10Y	Life of Fund (19.12.2018)
Class J ^{USD} Shares	3.32	11.18	29.92	7.83	15.65		18.11
S&P 500 Index	3.22	10.56	29.88	11.49	15.05		17.00
Russell 3000 [®] Growth Index	1.81	11.23	37.95	11.54	17.82		20.23

CALENDAR YEAR PERFORMANCE %

	2023	2022	2021	2020	2019	2018†
Class J ^{USD} Shares	24.29	-24.30	28.81	35.84	31.94	-25.00
S&P 500 Index	26.29	-18.11	28.71	38.26	35.85	0.05

† Since inception of Class J^{USD} Shares on 19.12.2018 through 31.12.2018

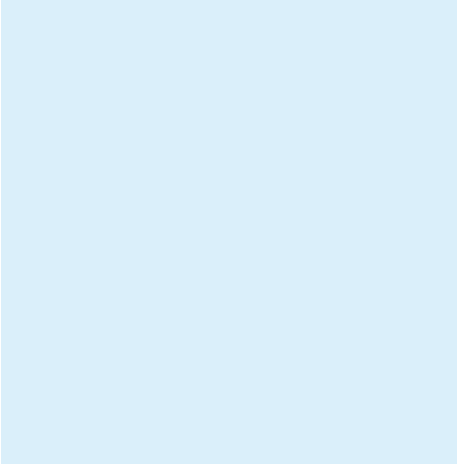
The primary benchmark changed from the Russell 3000[®] Growth Index to the S&P 500[®] Index in 2020. Past performance is not necessarily a guide to future performance. Returns for periods of one year or more are annualized. All charges and fees, except any entry, exit and switching charge, have been taken into account in calculating the Fund's performance. Returns for other share classes will differ from those shown above. The investment return and principal value of an investment in the Fund will fluctuate so that shares, on any given day or when redeemed, may be worth more or less than the original cost. Levels and bases for taxation may change. For the most current month-end performance information, please visit our web site

This is a marketing communication. Please carefully consider the investment objectives, risks, charges, and expenses of the Company. This and other important information is contained in the Company's Prospectus and KIIDs, which you may obtain by visiting sicav.williamblair.com. Read these documents carefully before investing.

The Fund is a sub-fund of William Blair SICAV, a "société d'investissement à capital variable", incorporated under the laws of the Grand Duchy of Luxembourg having its registered office at 31, Z.A.I. Bourmicht, Bertrange, registered in the R.C.S. Luxembourg under n^o 98806 and approved by the Luxembourg Supervisory Authority of the Financial Sector (the "CSSF") as an undertaking for collective investment in transferable securities ("UCITS") in accordance with the EU directive 2009/65/EC, as amended (the "Company"). Authorization of the Company by the CSSF is not an endorsement or guarantee nor is the CSSF responsible for the contents of any marketing material or the Company's Prospectus or applicable Key Investor Information Document ("KIID"). Authorization by the CSSF shall not constitute a warranty as to the performance of the Company, and the CSSF shall not be liable for the performance of the Company.

William Blair

at sicav.williamblair.com.



TOP TEN HOLDINGS (%)^{2,3}

Company	Industry	% of Fund
Microsoft Corporation	Software	9.9
Alphabet Inc.	Interactive Media & Services	8.8
NVIDIA Corporation	Semiconductors & Semiconductor Equipment	6.2
Amazon.com, Inc.	Broadline Retail	6.0
Mastercard Incorporated	Financial Services	4.9
UnitedHealth Group Incorporated	Health Care Providers & Services	4.4
WALMART INC	Retail	3.9
TJX COMPANIES INC	Textiles, Apparel & Luxury Goods	3.1
Abbott Laboratories	Health Care Equipment & Supplies	3.0
Canadian Pacific Kansas City Limited	Ground Transportation	2.6
Total Top 10		52.8

SECTOR DIVERSIFICATION (%)^{2,3}

Sector Type	Fund	Index ¹
Information Technology	28.3	42.8
Consumer Discretionary	17.1	14.8
Financials	12.7	6.4
Health Care	12.6	11.2
Communication Services	8.8	11.6
Industrials	8.1	6.5
Consumer Staples	4.8	4.1
Energy	3.4	0.7
Materials	2.4	0.9
Real Estate	1.8	0.9
Utilities	0.0	0.1

MARKET CAP DIVERSIFICATION (%)^{2,3}

Market Cap	Fund	Index ¹
> \$100.0B	59.4	75.3
\$30.0B - \$100.0B	14.4	13.9
\$5.0B - \$30.0B	19.0	7.5
< \$5.0B	7.2	3.3

PORTFOLIO MANAGEMENT**David C. Fording, CFA**

Started in Industry: 1995

Education: M.B.A.,
New York Univ.;
B.A., Tufts Univ.

1 The S&P 500[®] Index is an index of 500 stocks chosen for market size, liquidity and industry grouping, among other factors. The S&P 500 is designed to be a leading indicator of U.S. equities and is meant to reflect the risk/return characteristics of the large cap universe. The S&P 500 is a market value weighted index—each stock's weight is proportionate to its market value. The Russell 3000[®] Growth Index is included as a supplemental reference. It consists of large, medium and small-capitalization companies with above average price-to-book ratios and forecasted growth rates. The index is weighted by market capitalization and large/medium/small companies make up approximately 80%/15%/5% of the index. For more information on the index, please visit the website at www.russell.com/Indexes.

2 Top ten holdings are shown as % of total net assets. Sector and market cap diversification exclude cash equivalents. Sector diversification calculated by William Blair based on Global Industry Classification Sectors (GICS). Market capitalization and geographic distribution are calculated by William Blair. Weights shown are percentages of total net assets. Sector weights may vary over time as benchmark index weights shift.

3 Information about the Fund's holdings should not be considered investment advice. There is no guarantee that the Fund will continue to hold any one particular security or stay invested in any one particular sector. Holdings are subject to change at any time.

This document has been prepared and issued by WILLIAM BLAIR INVESTMENT MANAGEMENT, LLC in its capacity as a delegate of the FUNDROCK MANAGEMENT COMPANY S.A., a "société anonyme", incorporated under the laws of the Grand Duchy of Luxembourg having its registered office at 33, rue de Gasperich, L-5826 Hesperange and registered in the R.C.S. Luxembourg under n° 104196 (the "Management Company"). The Management Company is authorised and regulated by CSSF as the management company of UCITS under the EU directive 2009/65/EC, as amended. The Management Company has been appointed as the management company of the Company and has appointed WILLIAM BLAIR INVESTMENT MANAGEMENT, LLC, the asset management business of WILLIAM BLAIR & COMPANY, LLC., having its registered office at 150 North Riverside Plaza Chicago, IL 60606, USA as the investment manager for the Fund. William Blair & Company, L.L.C. is authorized as the global distributor of the Company and to facilitate the distribution of Shares in certain jurisdictions through financial intermediaries.

The Articles of Incorporation, the Prospectus, the KIID, the Annual and Half-yearly Reports of the Fund and the Subscription Form are available free of charge in English and German from the website sicav.williamblair.com or at the registered office of the Management Company (33, rue de Gasperich, L-5826 Hesperange, Grand Duchy of Luxembourg), at the registered office of the Fund (William Blair SICAV, 31, Z.A. Bourmicht, L-8070 Bertrange, Grand Duchy of Luxembourg) or from the Swiss representative, First Independent Fund Services Ltd, Feldeggstrasse 12 CH-8008 Zurich, and in German language at Marcard, Stein & Co., Ballindamm 36, 20095 Hamburg, Germany, and at Bank of Austria Creditanstalt AG, Am Hof 2, 1010 Vienna, Austria. Paying agent in Switzerland is NPB New Private Bank Ltd, Limmatquai 1, CH-8001 Zurich.